



Reflex level gauge

LGI-CS

Application and function

The reflex level gauge is a direct water level indicator that is mainly used on steam boilers and pressure vessels. Due to the special design of the reflective glass, the water column appears dark and the vapour area bright.

This product complies with EU Directive 2014/68/EU. The applicable regulations are AD2000 and the ASME Boiler and Pressure Vessel Code.

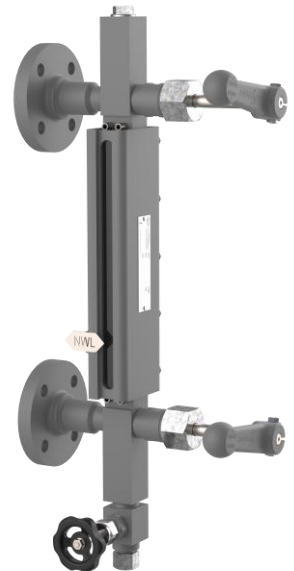
The reflective indicator is certified according to DIN EN 12952-7 and DIN EN 12953-6 as a water level indicator for shell boilers and water tube boilers.

Technical basic equipment

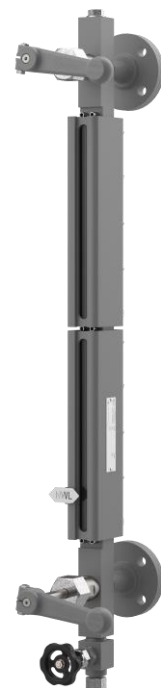
- Display body made of pressure vessel steel
- Freely selectable display orientation
- Quick-closing spindle with hand lever
 - Internal valve parts made of stainless steel
- Drain valve AV250
- Vent plug BSP G 1/2"
- Sight glass made of borosilicate according to DIN 7081

Optional versions

- Parts with contact with medium made of stainless steel
- Double drain valve
- Vent valve
- Customer-specific drain connection
- Customer-specific process connections
- Sight glass made of aluminium silicate



LGI-CS Size 6

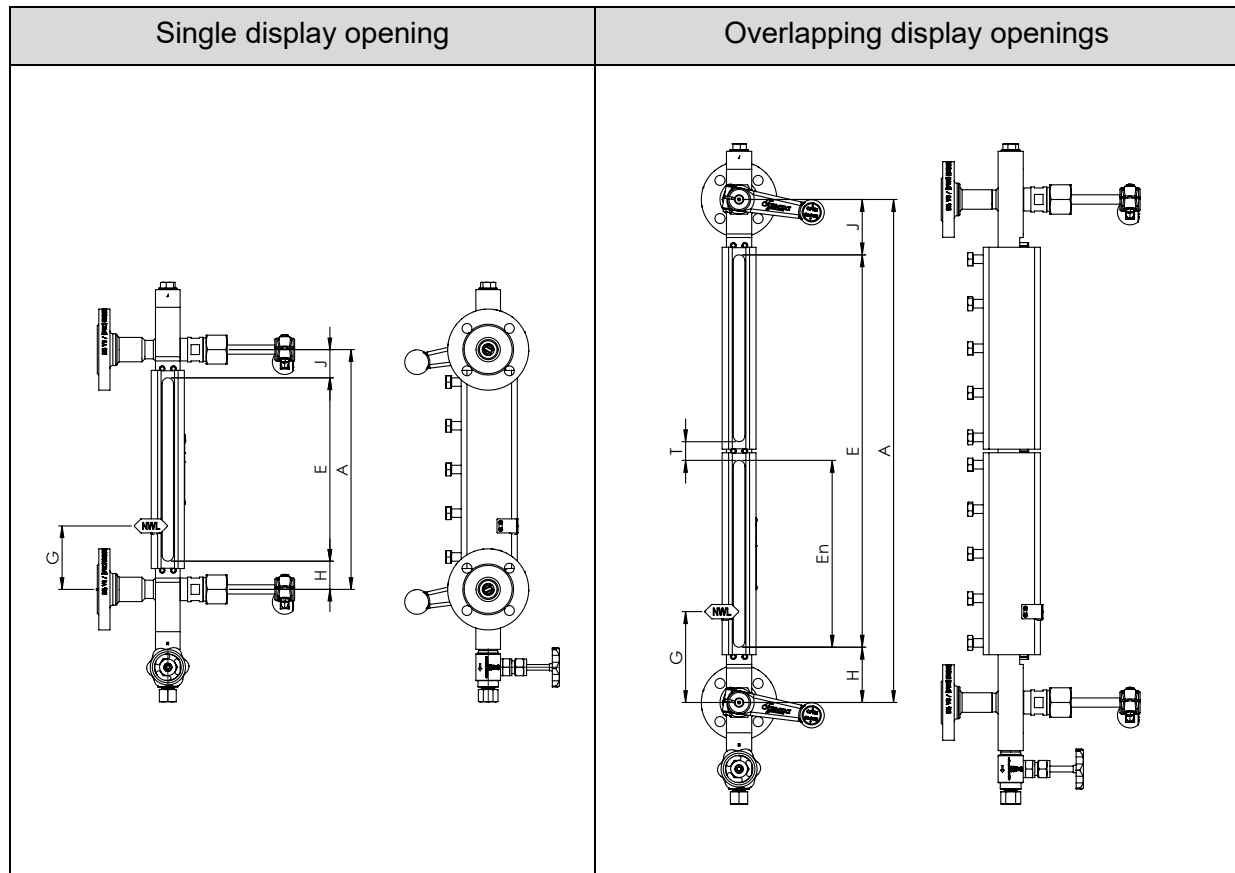


LGI-CS Size 6/2ü

Technical data

Operating limits LGI-CS	perm.pressure [PS]	perm. temperature [TS]
Medium with glass attack (e.g. water vapour)	32 bar 464 psig	-20 bis 239 °C -4 bis 462 °F
Medium without glass attack (e.g. nitrogen)	100 bar 1450 psig	-20 bis 40 °C -4 bis 462 °F
	20 bar 290 psig	-20 bis 300 °C -4 bis 527 °F

Dimensions and sizes



The indicators shown are models with left / back display orientation.
The dimensions H, J and A must be specified individually.

		minimal	
		[mm]	[inch]
Upper blind space	[J]	40	1 4/7
Lower blind space	[H]	40	1 4/7
Blind space	[T]	26mm / 1"	
Prozess connection	[A]	E + 80mm / 3.2"	

Available dimensions

	Size	Sight length (Dimension E)		Process connection (Dimension A _{min})	
		[mm]	[inch]	[mm]	[inch]
Single display opening	2	120	4 ⁵ / ₇	200	7 ⁷ / ₈
	3	145	5 ⁵ / ₇	225	8 ⁶ / ₇
	4	170	6 ² / ₃	250	9 ⁵ / ₆
	5	200	7 ⁷ / ₈	280	11
	6	230	9	310	12 ¹ / ₅
	7	260	10 ¹ / ₄	340	13 ² / ₅
	8	300	11 ⁴ / ₅	380	15
	9	320	12 ³ / ₅	400	15 ³ / ₄
	10	350	13 ⁷ / ₉	430	17
	Overlapping display openings	6/2ü	486	19 ¹ / ₇	566
7/2ü		546	22	626	24 ² / ₃
9/2ü		666	26 ² / ₇	746	29 ³ / ₈
7/3ü		832	32 ³ / ₄	912	36
9/3ü		1012	39 ⁵ / ₆	1092	43
10/3ü		1102	43 ² / ₅	1182	46 ¹ / ₂
8/4ü		1278	50 ¹ / ₃	1358	53 ¹ / ₂
7/5ü		1404	55 ² / ₇	1484	58 ³ / ₇
10/4ü		1478	58 ¹ / ₅	1558	61 ¹ / ₃
8/5ü		1604	63 ¹ / ₇	1684	66 ² / ₇
6/7ü		1766	69 ¹ / ₂	1846	72 ² / ₃
8/6ü		1930	76	2010	79 ¹ / ₇
9/6ü		2050	80 ⁵ / ₇	2130	83 ⁶ / ₇
10/6ü		2230	87 ⁴ / ₅	2310	91
9/7ü		2396	94 ¹ / ₃	2476	97 ¹ / ₂
7/9ü	2548	100 ¹ / ₃	2628	103 ¹ / ₂	
10/7ü	2606	102 ³ / ₅	2686	105 ³ / ₄	



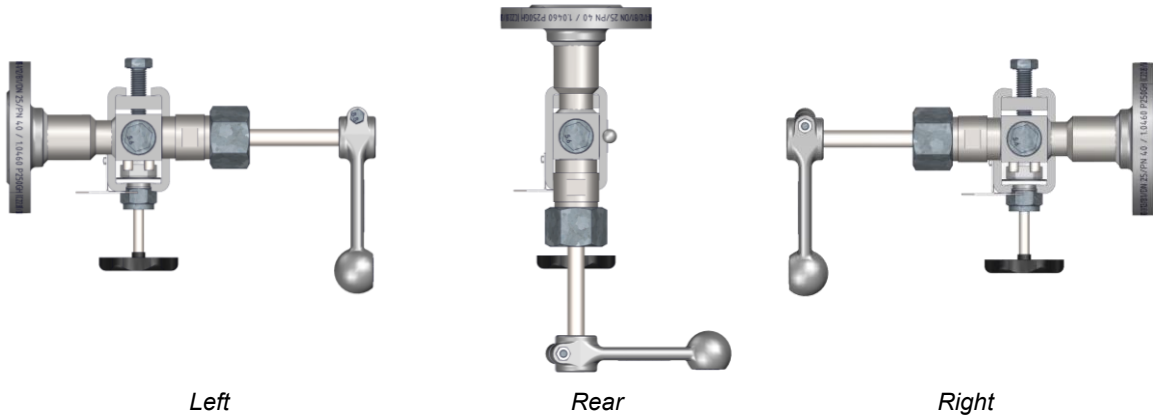
NOTICE

Material damage due to weight load

If the total weight of the indicator exceeds 30kg, the connecting elements are subjected to excessive loads.

- Ensure sufficient support. (e.g. with spring hangers)

Possible display orientations

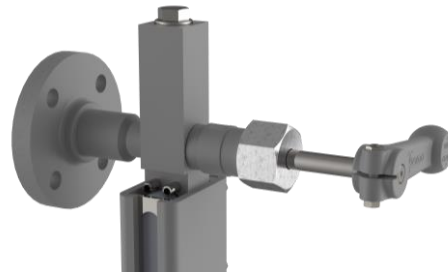


Basic equipment

The reflex level gauges are equipped with integrated shut-off valves and an AV250 drain valve. Customised equipment is possible.



Drain valve AV250



integrated quick-closing spindle with hand lever

Type	Data sheet	Article-No.
AV250 Cutting ring screw connection DS12	D-09-D-54181-EN	15-16613

Accessories and optional versions

Description	Inscription	Article-No.
Water level mark	NW-LWL-NB	25-13645
	HHWL	25-13717
	HWL	25-13716
	NWL	25-13698
	LWL	25-13718
	LLWL	25-13719

Two self-tapping screws are required for fixing each water level marker; article number: 40-11047.



Water level mark-NWL

Examples of the optional versions

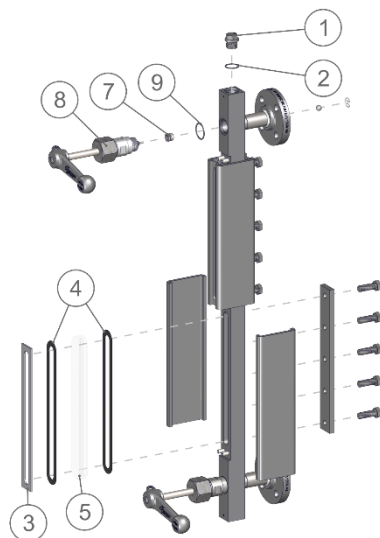
Vent valve	Double drain valve
<p><i>Ex.: AV250</i></p>	<p><i>Ex.: AV251</i></p>

Type	Data sheet	Article.No.
Vent valve AV250 Cutting ring screw connection DS12	D-09-D-54181-EN	15-16613
Double drain valve AV251 Cutting ring screw connection DS12	D-09-D-61489-EN	15-14733

Spare parts

pos.	Designation	Size	Item no.	Quantity
1	Screw plug	G 1/2"	40-00329	1
2	Sealing ring	21 x 26 x 1.5 mm	40-00099	1
3	Pressure plate	2	40-00422	n x 1
		3	40-00423	
		4	40-00424	
		5	40-00425	
		6	40-00426	
		7	40-00427	
		8	40-00428	
		9	40-00429	
		10	40-00430	
		4-5	Spare parts package	
3	15-13058			
4	15-13059			
5	15-13060			
6	15-13061			
7	15-13062			
8	15-13063			
9	15-13064			
10	15-13065			
7	Valve seat			-
8	Valve upper part	-	15-20106	1
9	Sealing ring	27 x 32 x 1.5 mm	40-00188	1

Spare parts package consisting of 2x gaskets and 1x reflective glass
n = quantity of display openings



Digital documentation



Direct download



Product page on the Internet

Igema GmbH

Antwerpener Str. 1
48163 Muenster
Germany

www.igema.com

Telephone: +49 25 01 924 24-0
Telefax: +49 25 01 924 24-99
info@igema.com

